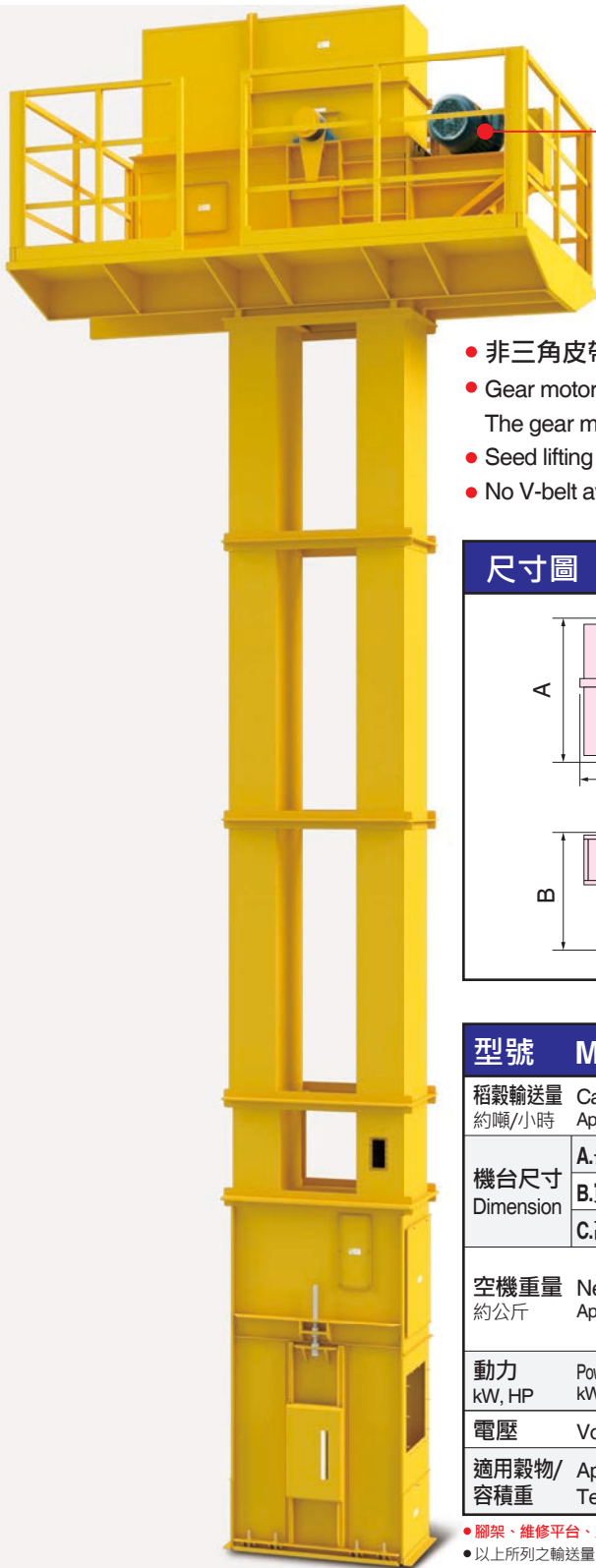


三久提昇機

SUNCUE BUCKET ELEVATOR



SE-120

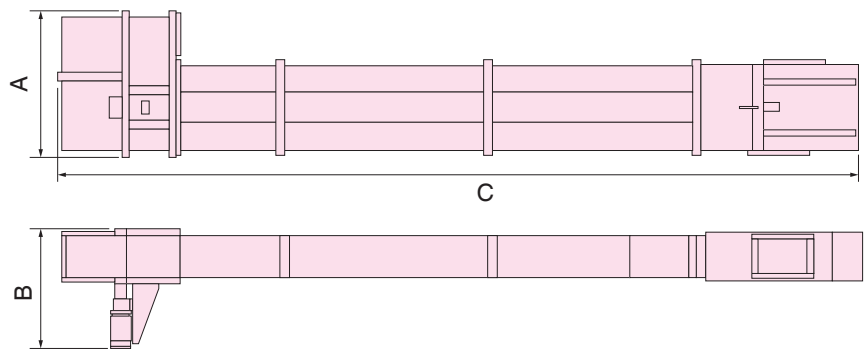
減速機馬達
Gear motor



特點 FEATURES

- SE-13 · SE-25 · SE-35 · SE-50 · SE-70減速機馬達、直接傳動。SE-120減速機採鏈條直接帶動，裝有防逆轉裝置。
- 種子專用設計，不易破壞穀物、不易產生碎米。
- 非三角皮帶傳動，可免皮帶打滑、鬆弛、易斷，不易阻塞故障，耐職業長期使用。
- Gear motors of SE-13, SE-25, SE-35, SE-50, and SE-70 function by direct coupling transmission. The gear motor of SE-120 does direct transmission via a chain with anti-reverse device.
- Seed lifting and durable design; assure grain kernels and minimum breakage.
- No V-belt avoid to skid, slack, broken and block, for professional and long-term use.

尺寸圖 DIMENSIONS



型號	MODEL	SE-13	SE-25	SE-35	SE-50	SE-70	SE-120
稻穀輸送量 約噸/小時	Capacity Paddy Approx. ton/hr	13	25	35	50	70	120
機台尺寸 Dimension	A.長 Length mm	670	1,190	1,300	1,410	1,704	2,960
	B.寬 Width mm	800	1,030	1,050	1,300 1,390	1,565 1,716	1,150
	C.高 Height m	4.9~8.9	3~13	7.4-15.4 15.5-22.4	7.6-18.7 18.8-26.6	7~14.8 14.9-20.8 20.9-26.8	15~21 21.1-28
空機重量 約公斤	Net Weight Approx. kg	250 全高為 8,956mm時 *Height =8,956mm	620 全高為 13,010mm時 *Height =13,010mm	820 全高為 13,470mm時 *Height =13,470mm	1,640 全高為 21,740mm時 *Height =21,740mm	1,926 全高為 14,707mm時 *Height =14,707mm	2,890 全高為 20,013.5mm時 *Height =20,013.5mm
動力 kW, HP	Power Consumption kW, HP	1.5, 2	2.2, 3	2.2, 3 3.7, 5	3.7, 5 5.5, 7.5	5.5, 7.5 7.5, 10	11, 15 11, 15 15, 20
電壓	Voltage	三相3P, 220V/380V/415V/440V, 50/60Hz					
適用穀物/ 容積重	Application/ Test Weight	稻穀: 560g以上/公升、麥類: 680g以上/公升、玉米: 690g以上/公升、豆類等 Paddy: >560g/liter, wheat: >680g/liter, maize: >690g/liter and pulses etc.					

- 腳架、維修平台、入料斗、出料斗與風管為選配件。
- 圖示及規格僅供參考，實際產品規格以客戶簽署訂單及出貨實物為主。
- 以上所列之輸送量，是以稻穀容積重：1公升=560公克以上、小麥容積重：1公升=680公克以上、玉米容積重：1公升=690公克以上為測定基準。
- **Stand, maintenance platform, inlet and discharge hopper and spare pipe are optional.**
- The specification and graph is for reference only. Actual specification of SUNCUE product shall be based on the Sales Confirmation which customers sign and delivered products.
- The transmission volume listed above is based on the: Paddy test weight: 1 liter=560 gram above. Wheat test weight: 1 liter=680 gram above. Maize test weight: 1 liter=690 gram above.



三久鏈運機

SUNCUE CHAIN CONVEYOR



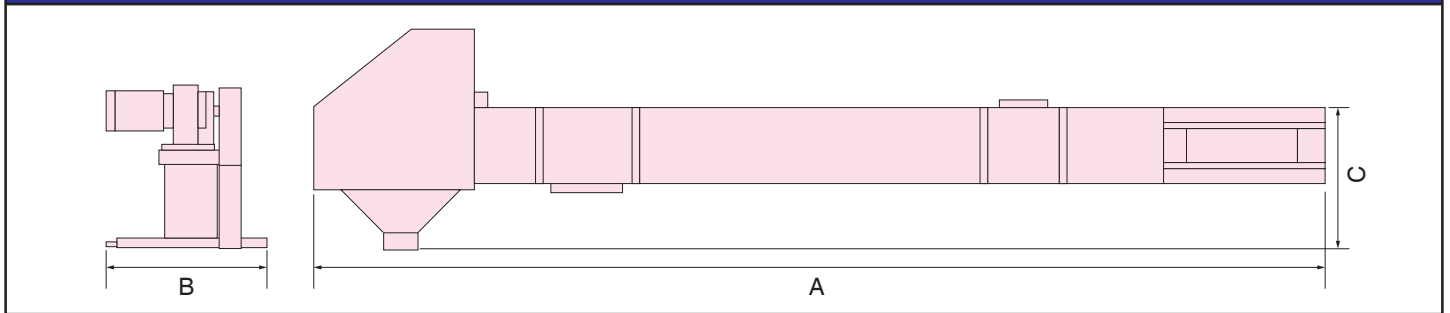
減速機馬達
Gear motor

特點 FEATURES

- 中間投入料，排出位置可任意設定。
- 密閉式輸送，粉塵不外溢，堅固耐用。輸送量大，聲音小，低噪音設計。
- 種子專用特殊掃除設計不易混種，不易殘留，刮板不易傷害穀物，不易產生碎米。
- Inlet position and outlet position can be decided according to your needs.
- Hermetic conveyor keeps dust inside. Durable, efficient and low in noise.
- Specially designed for conveying seeds for minimum varieties mixing, residual and damage.

SFC-120

尺寸圖 DIMENSIONS



型號 MODEL	SFC-30		SFC-50				SFC-120					SFC-150						
稻穀輸送量 約噸/小時 Capacity Paddy Approx. ton/ hr	30		50				120					150						
機台尺寸 Dimension	A.長 Length m	<19.9	20~29.9	<9.9	10~19.9	20~29.9	30~44.9	45~55	17~20.9	21~30.9	31~40.9	41~50.9	51~61	<17	17~25.9	26~33.9	34~42.9	43~51
	B.寬 Width mm	980		1,110				1,795										
	C.高 Height mm	880		990				1,445										
空機重量 約公斤 Net Weight Approx. kg	1,380 全長為19,054mm時 *Length=19,054mm		2,440 全長為20,734mm時 *Length=20,734mm				5,400 全長為21,090mm時 *Length=21,090mm											
動力 kW, HP Power Consumption	2.2, 3	3.7, 5	2.2, 3	3.7, 5	5.5, 7.5	7.5, 10	11, 15	7.5, 10	11, 15	15, 20	18.5, 25	22, 30	7.5, 10	11, 15	15, 20	18.5, 25	22, 30	
電壓 Voltage	三相3P, 220V/380V/415V/440V, 50/60Hz																	
適用穀物 / 容積重 Application / Test Weight	稻穀: 560g以上/公升、麥類: 680g以上/公升、玉米: 690g以上/公升、豆類等 Paddy: >560g/liter, wheat: >680g/liter, maize: >690g/liter and pulses etc.																	

● 腳架、維修平台、入料斗、出料斗與風管為選配件。

● 圖示及規格僅供參考，實際產品規格以客戶簽署訂單及出貨實物為主。

● 以上所列之輸送量，是以稻穀容積重：1公升=560公克以上、小麥容積重：1公升=680公克以上、玉米容積重：1公升=690公克以上為測定基準。

● Stand, maintenance platform, inlet and discharge hopper and spare pipe are optional.

● The specification and graph is for reference only. Actual specification of SUNCUE product shall be based on the Sales Confirmation which customers sign and delivered products.

● The transmission volume listed above is based on the: Paddy test weight: 1 liter=560 gram above. Wheat test weight: 1 liter=680 gram above. Maize test weight: 1 liter=690 gram above.